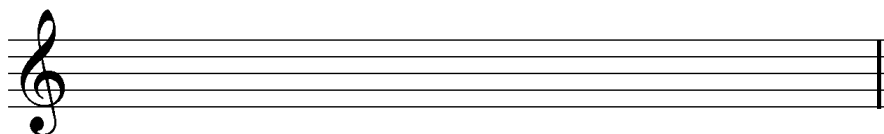


## Grade One Scales & Key Signatures

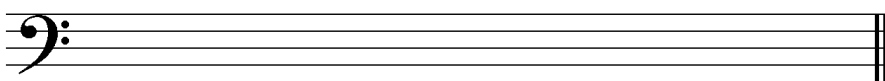
**This exercise sheet tests the scales and keys of C, G, D and F major ONLY. (Grade 1 ABRSM).**

♪ Write the following scales in semibreves (whole notes) with accidentals. Do not use a key signature.

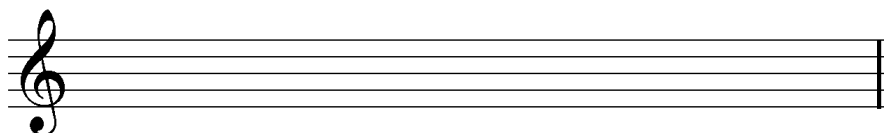
1. G major ascending



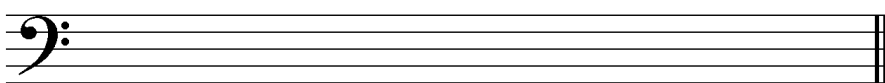
2. F major ascending



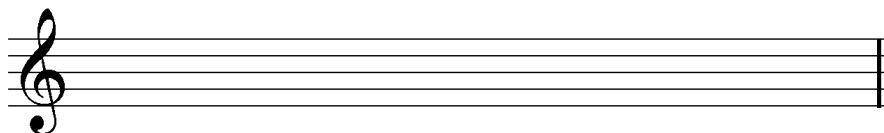
3. D major ascending



4. C major ascending



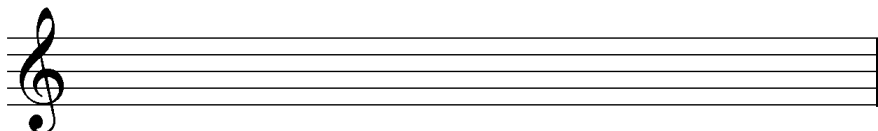
5. D major descending



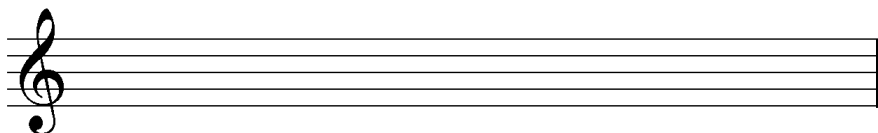
6. G major descending



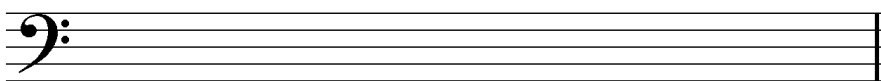
7. C major descending



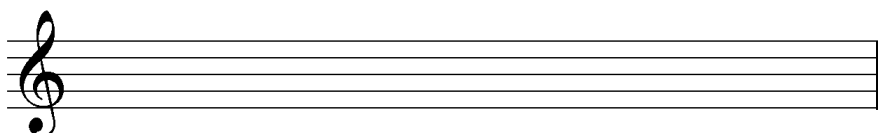
8. F major descending



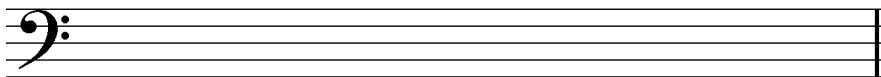
9. G major ascending



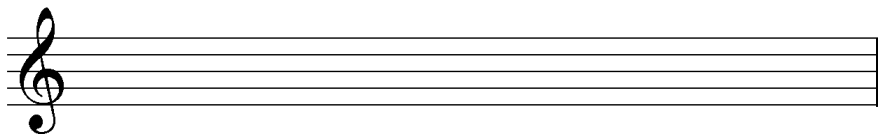
10. F major ascending



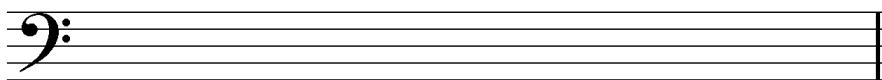
11. D major ascending



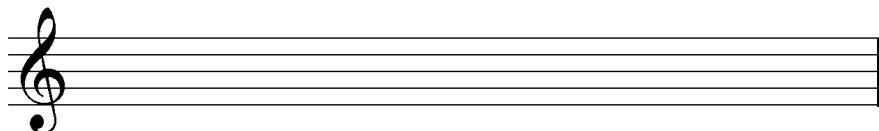
12. C major ascending



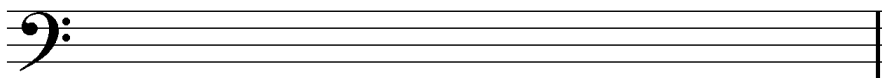
13. D major descending



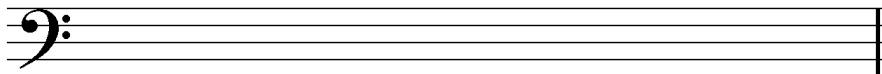
14. G major descending



15. C major descending

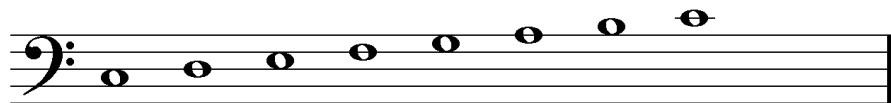


16. F major descending

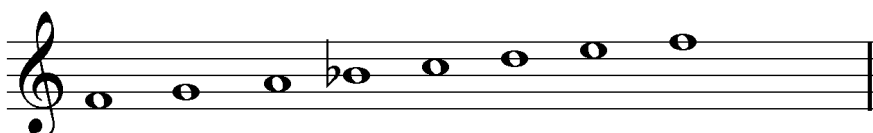


♪ Name the following scales e.g. "C major ascending".

17.



18.



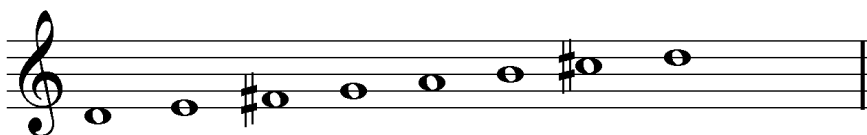
19.



20.



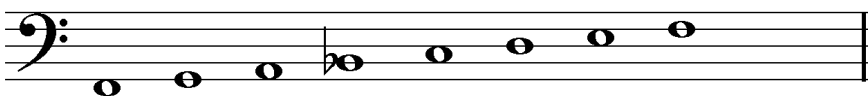
21.



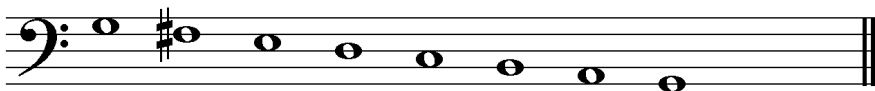
22.



23.



24.



♪ Write the key signatures:

25. D major



26. G major



27. F major



28. How many sharps are there in the key of D major?

29. How many sharps are there in C major?

30. How many flats are there in D major?

31. How many flats are there in F major?

32. How many sharps are there in G major?

33. What's the 3<sup>rd</sup> degree of the scale of C major?

34. What's the 7<sup>th</sup> degree of the scale of F major?

35. What's the 5<sup>th</sup> degree of the scale of D major?

36. What's the 2<sup>nd</sup> degree of the scale of G major?

37. What's the 7<sup>th</sup> degree of the scale of D major?

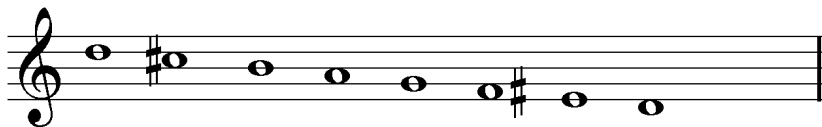
38. What's the 3<sup>rd</sup> degree of the scale of D major?

39. Which key contains the notes D, A, C# and B?

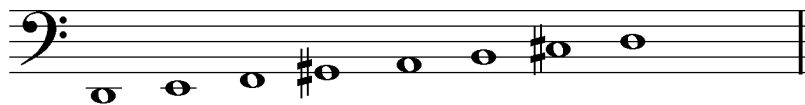
40. Which key contains the notes G, C, F# and D?
41. Which key contains the notes C, F, B and E?
42. Which key contains the notes G, C, D and Bb?
43. True or false: we write accidentals on the left side of the note?
44. True or false: the 7<sup>th</sup> degree of the scale can be a flat?

♪ Spot the mistakes:

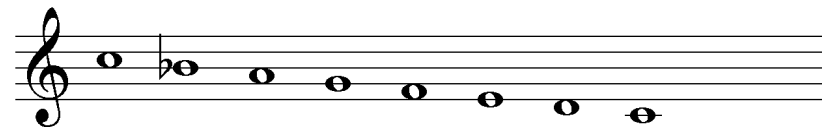
45.



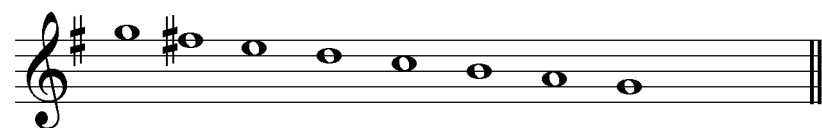
46.



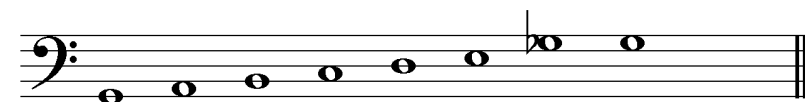
47.



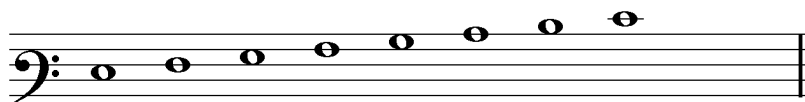
48.



49.

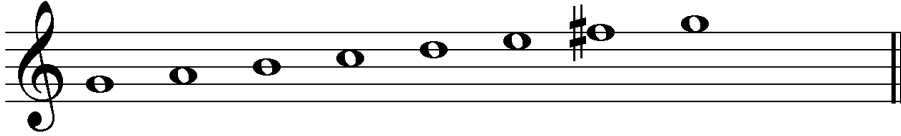


50.



**Answers:**

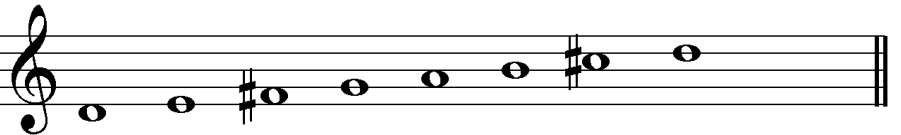
1.



2.



3.



4.



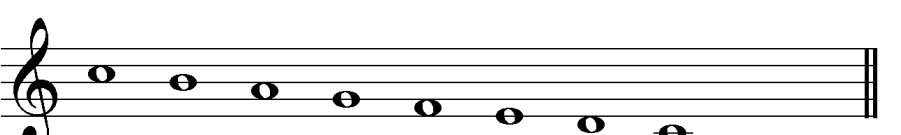
5.



6.



7.



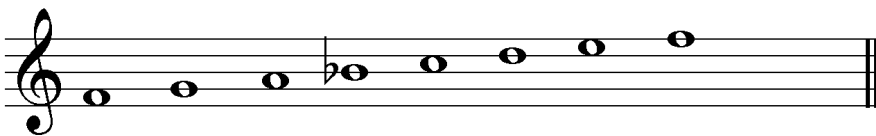
8.



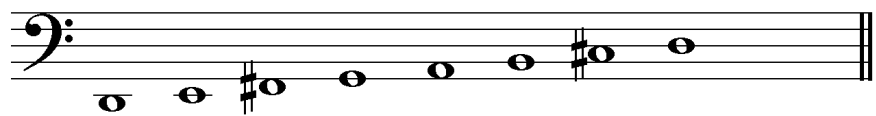
9.



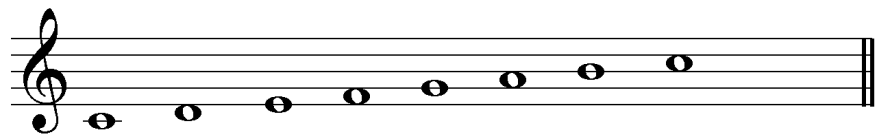
10.



11.



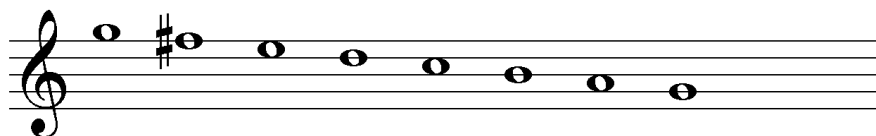
12.



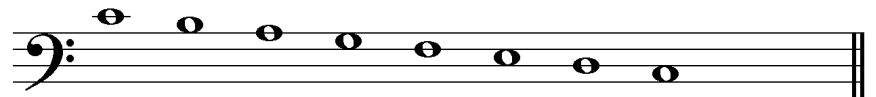
13.



14.



15.



16.



- 17. C major ascending
- 18. F major ascending
- 19. D major descending
- 20. G major ascending



21. D major ascending
22. C major descending
23. F major ascending
24. G major descending

25.



26.



27.



28. Two
29. Zero
30. Zero
31. One
32. One
33. E
34. E
35. A
36. A
37. C#
38. F#
39. D major
40. G major
41. C major
42. F major
43. True
44. False
45. The sharp is on the wrong side of the F – it should be on the left.
46. There shouldn't be a G sharp – there should be an F sharp instead.
47. The Bb should not have an accidental because it should be B natural.
48. You should use a key signature OR accidentals, but not both.
49. G flat should be F#.
50. The bass clef is in the wrong position.